

DATACARD® CD800™ SERIES CARD PRINTER



The CD800 series card printer provides exceptional enterprise-class desktop card printers — built for outstanding speed, printing quality, modularity, flexibility and reliable performance.

The best value in enterprise-class desktop card printing

The Datacard® CD800™ series card printer efficiently produces great-looking ID cards in less time than any other comparable desktop printer. It's engineered and built to handle the higher volumes and requirements of state and local government, corporate, commercial and educational card issuance. When your application demands speed, performance and reliability in a compact and efficient unit, the CD800 card printer is the ideal choice.

A card production powerhouse fueled by innovation

- **Industry-leading print speeds.** The CD800 series card printer dramatically improves your card issuance throughput with printing speeds that rival the fastest card printers in its class.
- **Industry-leading image quality.** Reproduce intricate graphics such as state seals and school emblems with the CD800 series printer's enhanced print modes. Resolutions up to 300 x 1200 dpi — an industry first — mean that fine text, 2D bar codes and complex two-byte character sets print sharp and bleed-free. Exclusive TrueMatch™ printing technology delivers vibrant colors that more closely match the colors on your screen.
- **Reliable operation.** The CD800 series printer withstands the daily demands of enterprise-level card issuance. Industry-exclusive TruePick™ card handling virtually eliminates jams by accurately picking cards, standard or thin, with no adjustments.
- **Best value today and tomorrow.** Rest assured that the CD800 series printer investment you make now will continue to pay off in the future. Modular design lets you field upgrade your CD800 series printers with different encoders, an inline lamination module option and features as your card issuance needs change.

DatacardGroup

Make the CD800™ series printer part of your total card issuance

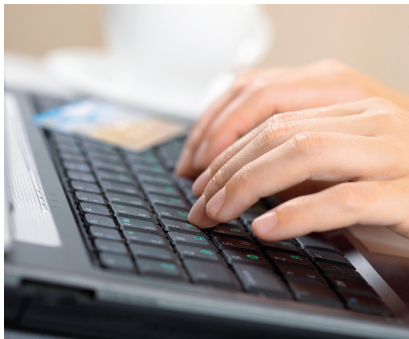


A long pedigree of experience and innovation guided the development of the Datacard® CD800™ series card printer. We have more than 40 years of experience building card issuance systems, including more than 200,000 desktop systems. More than 350 government programs in 92 countries trust Datacard systems for their card issuance. So, we know the demands of your enterprise environment: Higher volumes. Extended production runs. Complex applications. More on-card technology. Greater security. All of these things factored into the design of the CD800 series printer. You not only get a desktop card printer that's compact and easy to use, you get an enterprise-class machine that's ready to take on *your* application.



Fits where most card printers don't

- **State and local government:** Datacard printers are the choice for hundreds of state and local government card issuance programs. The CD800 series card printer's compact size and simple operation make it a great choice for a wide range of government applications, from transit passes to photo IDs for assistance program recipients.
- **Corporate:** Secure identification is the front-line defense for protecting people and assets. The CD800 series card printer can produce a wide variety of employee, contractor and visitor badges, plus time and attendance cards and access control cards to secure facilities and parking.
- **Education:** Keep student registration lines moving with the reliable, high-speed CD800 series card printer. Use it anywhere for on-the-spot issuance of multi-purpose campus cards, staff and student photo IDs, and access cards for libraries, residence halls and food services.



Works on your network

Your IT department will have an easy time adding the CD800 series card printer to your organization's network. It meets IT expectations for networked devices with standards-compliant Ethernet and USB connectivity. An internal print server eliminates the need for an external network box. IT administrators can keep your CD800 series printer up and running from anywhere using remote management and diagnostics. There's also a rich set of software tools for easily integrating the CD800 series printer into sophisticated, custom card issuance applications.



Enterprise doesn't mean complicated

The CD800 series card printer maximizes your team's productivity by minimizing the time they need to learn and operate it. Printer controls and both the input and output card hoppers are conveniently up front for easy access. The reloadable supply cartridges simply load into the printer and laminator. Operation is a breeze. Intuitive icons and messages on the soft-touch LCD control panel guide you through printer operation, so you're never left wondering what to do next.

One great printer, dozens of great innovations

Years of development and numerous customer input sessions have gone into the creation of the CD800 series card printer. It's packed with industry-leading innovations and features, such

- Automatic 100-card input hopper with exception card slot, optional 200-input hopper
- 25-card output hopper standard with optional 100-card output hopper
- Optional six-compartment multi-hopper, 600-card total capacity
- Optional laminator with unique card debower, tactile impression feature and bar code reader
- Optional, field-upgradable smart card and magnetic stripe encoding modules
- Two-sided or one-sided card printer models (factory option or field upgradeable)
- Color or monochrome printing in the same unit
- Reloadable supply cartridges with drop-in cleaning roller
- Intuitive LCD panel with soft-touch controls and soft-power switch
- Ethernet and USB connectivity standard on all CD800 printer models
- Advanced printer driver; support for third-party application development

The Datacard CD800 series card printer is an ideal choice for applications such as:

- Employee, contractor and visitor IDs
- Student and faculty ID cards
- Government photo IDs
- Casino frequent player cards
- Photo IDs for government assistance programs



Datacard® CD800™ Series Card Printer



Datacard® CD800™ Card Printer with optional multi-hopper



Datacard® CD800™ Card Printer with inline lamination module



Enhanced Printing

The CD800 series card printer solves the problem of printing fine text and intricate graphics onto plastic cards. With the 300 x 1200 dpi resolution advantage of the CD800 series printer, you can print 6-point text, 2D bar codes and complex two-byte character sets with the confidence that they will all be sharp, legible and bleed-free.

Stronger Security

With the CD800 series card printer with inline lamination module, you can add a tactile impression for enhanced security and branding. You can also use serialized laminates that require an optional bar code reader to provide an audit trail and validate the authenticity of the security overlay.

Engineered for enterprise-class ID card issuance

With its industry-leading speed, print quality and reliable performance, the Datacard® CD800™ series card printer is the new workhorse for enterprise-class card issuance. And, as these specs show, the CD800 series card printer is engineered to fit your most demanding applications.

You've read about it, now see a demo. Ask your Datacard Enterprise Solutions Provider about the CD800 series card printer.

CD800 Printer Standard Features and Specifications

Print technology	Direct-to-card dye-sublimation/resin thermal transfer
Print capabilities	One-sided (simplex) or optional two-sided (duplex) edge-to-edge printing Full-color and monochrome printing capability in the same printer Alphanumeric text, logos and digitized signatures; 1D/2D bar code images Printer pooling/sharing
Print resolution	Standard mode: 300 x 300 dots per inch; standard text, bar code and graphics printing High-quality mode: 300 x 600 dots per inch; enhanced text, bar code and graphics printing 300 x 1200 dots per inch; enhanced text and bar code printing 256 shades per color panel
Print speed	Full-color printing: Up to 220 cards per hour printing cards on one side (YMCKT*) Up to 165 cards per hour printing cards on two sides (YMCKT-K*) Monochrome printing: Up to 1,000 cards per hour printing cards on one side (Black HQ*)
Card capacity	Automatic feed: 100-card input for 0.030 in. (0.76 mm) cards; 25-card output standard Front exception card slot Separate reject location and holding tray (10-card capacity) Input hopper empty detection
Physical dimensions	One-sided printing: L 17.4 in. x W 8.8 in. x H 8.8 in. (44.2 cm x 22.4 cm x 22.4 cm) Two-sided printing: L 21.2 in. x W 8.8 in. x H 8.8 in. (53.8 cm x 22.4 cm x 22.4 cm) Six-compartment multi-hopper: L 27.5 in x W 16.5 in. x H 14.5 in. (69.9 cm x 41.9 cm x 36.8 cm)
Weight	One-sided printing: 9.0 lbs (4.1 kg) (depending on options) Two-sided printing: 12.0 lbs (5.4 kg) (depending on options) Six-compartment multi-hopper: 33.0 lbs (15.0 kg)
Connectivity	Bidirectional USB 2.0 high speed; Ethernet 10 Base-T/100-Base-TX (with activity light)
Warranties	30-month standard depot warranty; 30-month printhead warranty (no pass restrictions)

CD800 Printer Options

Magnetic stripe encoding	Field upgradeable ISO 7811 three-track option (high- and low-coercivity) JIS Type II single-track option Support for standard and custom data formats
Hopper	200-card input hopper
Multi-Hopper	Six-compartment multi-hopper; Six 100-card hoppers, 600-card total capacity
Laminator	Single- or dual-sided lamination
Print, lamination and tactile impression speed	Up to 210 cards per hour front side YMCK ribbon with front side lamination Up to 185 cards per hour front side YMCK-K ribbon, back side K with front side lamination Up to 200 cards per hour (one side print and lamination with Tactile) YMCK Up to 200 cards per hour (two sided printer and lamination with Tactile) YMCK-K
Smart card personalization	Factory options: Single-wire contact/contactless all-in-one encoder (read/write) for MIFARE, ISO7816, ISO14443 A/B, ISO15693, ISO FeliCa. DESFire. Two-wire contact/contactless all-in-one encoder (read/write) for MIFARE/DESFire, ISO7816, ISO14443, A/B Field upgradeable options: Single-wire contact/contactless all-in-one encoder (read/write) for MIFARE, ISO7816, ISO14443 A/B, ISO15693, ISO FeliCa. DESFire. Two-wire contact/contactless all-in-one encoder (read/write) for MIFARE/DESFire, ISO7816, ISO14443, A/B iCLASS® by HID, read/write encoder or read-only PC Prox by HID, read-only Third-party OEM smart card option-ready (for contactless readers only – encoder not included)
OpenCard	Factory option only; Supports one- and two-sided printing; Full-color and monochrome printing Front exception card slot supported; Supports legacy OpenCard formats; Ethernet or USB
Two-sided printing	Factory option or field upgradeable
End-user upgradeable options	Extended 100-card output hopper (available for single-hopper); Extended 200-card input hopper and CD800 series printer with inline lamination module (available for single-hopper); Kensington® security lock for printer

*Ribbon type and number of panels: Y=Yellow, M=Magenta, C=Cyan, K=Black, T=Inline Topcoat; HQ=High Quality

Discover how the CD800 series printer fits your card issuance needs

Is the CD800 series card printer the right choice for your applications? Find out by talking to your Datacard Enterprise Solutions Provider. They'll help you assess your requirements. Then, they'll show you how the CD800 series printer works as part of a total card issuance solution that includes software, capture devices and Datacard® Certified Supplies.



Support and service anytime, anywhere

Datacard Global Services stands ready to help you get optimum performance from your CD800 series printer. This network of authorized service providers in 120 countries offers planning, implementation and support services when and where you need them. You'll work with skilled professionals backed by over 40 years of Datacard Group experience.

DatacardGroup

Corporate Headquarters

11111 Bren Road West
Minnetonka, Minnesota 55343-9015
www.datacard.com